

The Door Switch

Life More Secure.



Patent Approved 7466237

Who Are We?

The Door Switch At CenterPointe Hospital



“ I have engrained in me a strong value for life. That is my driving force. I want to help people.” - Frank Cook

The Door Switch

Anti-Ligature Device

- Alarm activates with pressure

Preventative Solution

- Reduces occurrence of sentinel events

Nursing Staff Tool

- Needed tool to keep patients safe



Sentinel Events

- Most Suicides are considered preventable...
 - Yet suicide is consistently the **number one sentinel event** reported to the Joint Commission
 - Types of sentinel events:
 - medication errors
 - wrong-site surgery
 - restraint-related deaths
 - blood transfusion errors,
 - inpatient suicides
 - infant abductions
 - fatal falls



2010 National Patient Safety Goals (NSPG) Effective July 1, 2010



- Improve patient safety.
- Focus on problems in health care safety and how to solve them.
- Reduce sentinel events.

2010 National Patient Safety Goals (NSPG)

Effective July 1, 2010

- **Goal 15: Risk Assessment**

- The organization identifies safety risks inherent in its patients population.

- **NSPG.15.01.01: Identify patients risk for suicide.**

- *Applies to: Behavioral Health Care, Hospital (applicable to psychiatric organizations and patients being treated for emotional or behavioral disorders in general organizations)*



From The President

of NAPHS



- Top leaders in healthcare lobby the government for equal treatment and funds in psych industry
- An association made up of freestanding, non governmental psych hospitals
- The majority of their members are private, full psych hospitals.
- Nationally, there are 1200 psych units in general hospitals
 - 900 of these units are less than 25 beds
 - 600 less than 10 beds
 - 100 units are 50 beds or more
- 80 general hospitals are members of the NAPHS.

The Design Guide

for the Built Environment of Behavior Health facilities



Design Guide for the Built Environment of Behavioral Health Facilities

by David M. Sine, ARM, CSP, CPHRM
and James M. Hunt, AIA, NCARB

Distributed by the
National Association of Psychiatric Health Systems

www.naphs.org

Specialized Safety Products

Featured in The Design Guide

“Safety and security risks are presentidentify these risks in advance so that the hospital can prevent or effectively respond to incidents.”

-- The Joint Commission
“Standards and Rationale”

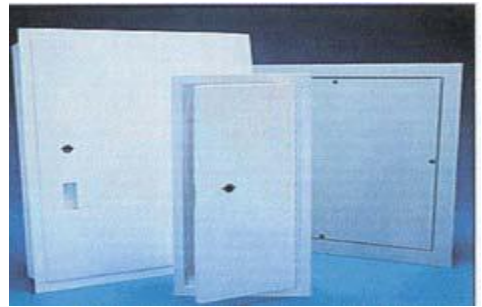
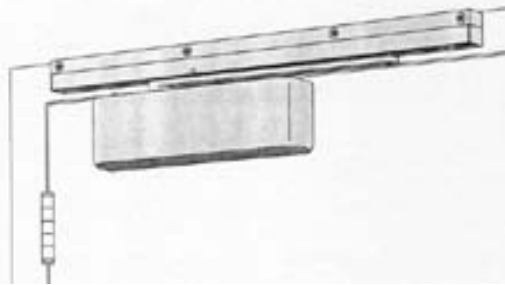
**2010 Hospital
Accreditation Standards**



Door Safety Products

Featured in The Design Guide

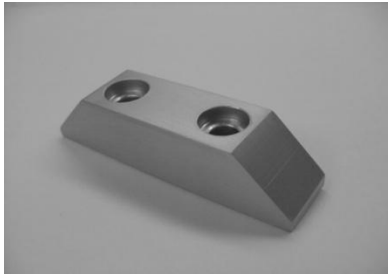
“The top of all tight-fitting doors provides a pinch point that allows a patient to tie a knot (in a sheet, the leg of a pair of jeans or other object), place it over the top of the door, and close the door. This provides a hanging device. One way to reduce this risk is with a pressure-sensitive device placed on the top of the door that sounds an alarm 31, 32, 33.”



BETA Site Testing

CenterPointe Hospital

Installed in 2006, The Door Switch underwent 3 phases of improvements. There are now 26 devices effectively working today.



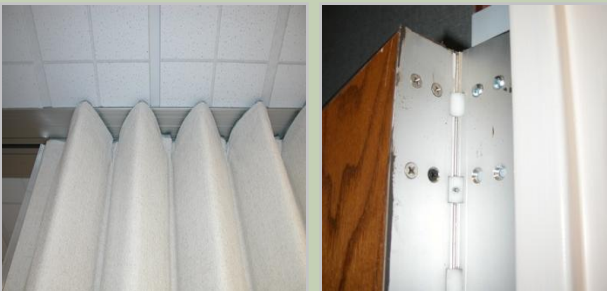
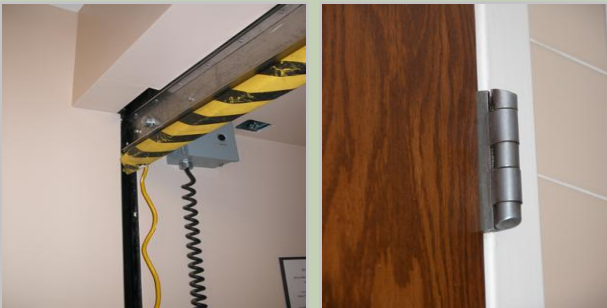
- Added auditing capabilities
- More coverage
- Eliminated hinge points



Field Research

Barnes Jewish Hospital

Hinge Points
No Privacy
Not Fire Resistant



Their Solution

Total Door Replacement

Norva Plastic Doors

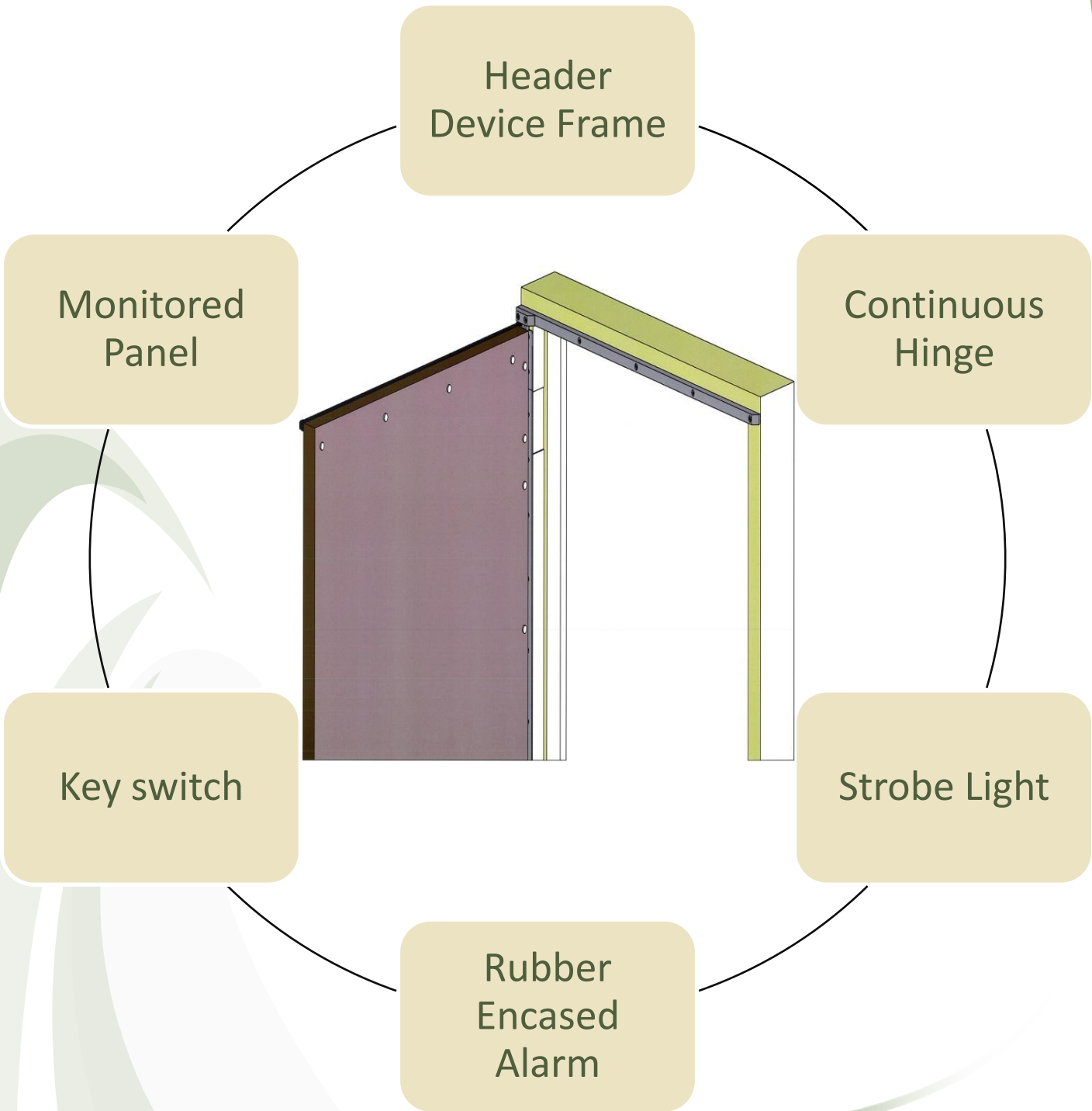


Soft Material Suicide
Proofing Door



Our Solution

A Retrofit Design



Positive Feedback



Life More Secure.

Maintains privacy

**Differentiates
between
tampering and
actual event**

**Professional
Installation**

**Keeps a record for
joint commission**

**Sleek,
unnoticeable
design**

**Not intrusive to
patient's program**

**Visual strobe light
ensures quick
response**

**Retrofit solution-
maintains fire
rating**

No Hinge Points

QUESTIONS?



Life More Secure.

Stephanie Woodcock

Executive Director

www.thedoorswitch.com

(877)-998-5625

11772 Westline Industrial Drive

Maryland Heights MO 63146